

welcome to **pure audio**

More Music, Less Technology

Your enjoyment of music was the motivation for Gary Morrison and Ross Stevens to create PureAudio. Our every design decision is to serve this purpose. Purity in sound, materials, design, and execution is our goal. Our user interfaces are refined away to an unobtrusive minimum. Our materials and component choices will ensure a lifespan amounting to decades.

We invite you to enjoy our creations ...

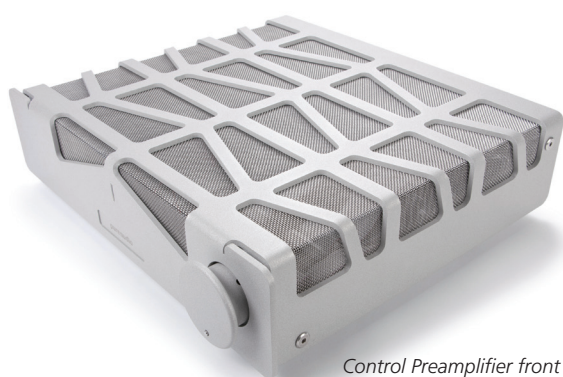
control preamplifier

"This product refines the pre-amplifier away until it is just a servant to the music. From the auto-selection to the tactile high precision volume control, nothing gets in the way of your listening experience. As our local retailer commented "it adds nothing to the music, and takes nothing away". I cannot think of a better compliment."

Gary Morrison

"Our goal with this product was to make it effortless to use. The apparent simplicity of the single large volume knob on the front panel allows great precision when setting the volume level and legibility when viewing from a distance. This combined with the automatic selection of the active source fulfills the dream of a product where the music dominates."

Ross Stevens



Control Preamplifier front



Control Preamplifier back

We believe our Control preamplifier will stand comparison with the very best available at any price. Our design is an exercise in minimalism in the service of music. At its heart is a high precision 32 step attenuator utilising non-magnetic Vishay-Dale resistors which provide fine control over the volume setting. Along with the buffer that follows, there is essentially no impact on the signal passing through. The result is pure. Just music, with nothing added, and nothing taken away.

Because we want your music to be at the fore, our user interface has been simplified so that it responds to your needs without calling any attention to itself. The large rotary control allows you to set your initial volume level, and when rotated to zero activates the preamp's standby mode. A slim wood cased remote handset allows level trimming during listening. Input selection is automated, responding intuitively to your selected source. This simplicity does not come at a cost, as complete flexibility is provided, with the preamplifier easily forming the heart of a purist 2 channel system, or integrating seamlessly into a complete combined 2-channel / home theatre installation.

We created the Control preamplifier as a complete dual mono design, with entirely separate left and right channel power supplies, signal paths, and ground systems. The interior is kept free of electronic noise, with no microprocessors, or other noise polluting elements. This care and attention contributes significantly to the purity of the music that you hear.

When partnered with our Reference Monoblock Class A Power

Amplifier the two products interconnect and interact seamlessly as a system in response to your needs.

Our universal chassis design fully supports our musical goals. Constructed from heavy aluminium, stainless steel mesh, and supported optimally on three custom designed feet, the non-resonant, non-magnetic structure presents a beautiful, architectural look.

Specifications:

Inputs: Four line inputs, 1 direct and 3 autoselected, 1 processor input, 12V or standby switched

Outputs: Two pairs of line outputs, 1 pair of record outputs

Control Terminals: 12V trigger in and out

Frequency Response: Flat from DC to greater than 100kHz

Input Impedance: 50k Ohms

Output Impedance: 100 Ohms

Distortion: <0.01% in normal operation

Hum & Noise: Inaudible

Power Consumption: 25 Watts

Dimensions: 410mm deep, 480mm wide, 115mm high

Weight: 12kg

If you have any questions or comments either ask your PureAudio retailer, or contact us via our website,

www.pureaudio.co.nz

We would be happy to hear from you.

pure audio